

# UB100i SERIES BIOLOGICAL MICROSCPE



**ISO9001**  
Certification

Design and production  
adheres to ISO9001  
International quality standard



**ISO14001**  
Certification

Design and production at the UOP  
CORPORATION has Plant conforms with  
ISO14001 specifications for  
environmental management systems.



CHONGQING UOP PHOTOELECTRIC  
TECHNOLOGY CO.,LTD.

EXPORTING AGENT:SHENZHEN  
CHIANRY CO., LTD

Address : Jin Long Hu Industrial Park , Beibei  
District , Chongqing, China.  
Post Code: 400700

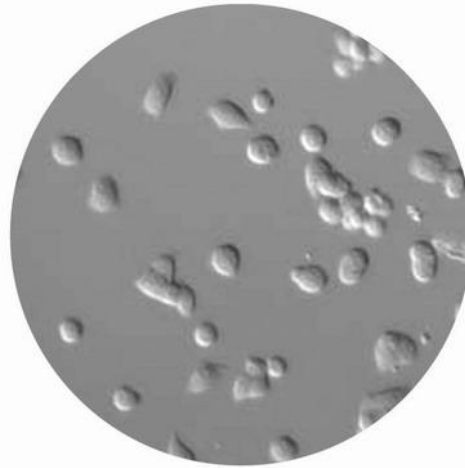
Address : Rm.1804, Wensheng Center, Wenjin Plaza,  
1010 WenjinRd.(N), Shenzhen, China.  
Post Code: 518020

## Objectives

Benefit from brilliant UCIS Infinity Achromatic Optics Design, objectives own higher numerical apertures, capture flat images over the entire field of view with virtually minimum curvature.



Brightfield



Phase-contrast



### High Eyepoint Eyepiece

10X, 21mm High eye point, View field  $\phi$ 18mm, Diopter adjustable, Eye shade optional



### Ergonomic and Flexible Observation Tub

30° inclined, adjustable Interpupillary Distance 52-74mm, 360° rotatable



MAXIMIZING YOUR BENEFITS AND ACHIEVING IT BY OUR MORE RELIABLE, EFFICIENCY AND AFFORDABLE PRODUCTS IS UOP'S RESPONSIBILITY THAT WILL NEVER STOP.

**WITH ITS ELEGANT FIGURE, BRILLIANT UCIS OPTICAL SYSTEM, THOUGHTFUL ERGONOMIC DESIGN AND STABLE MECHANISM, THE UB100i SERIES MICROSCOPES ARE ONE OF OUR CONTRIBUTION TO YOU FOR YOUR ROUTINE TASKS IN MEDICINE, CLINICAL LABORATORIES, PATHOLOGY, AND BIOLOGY.**

UB102i



UB103i



Equipped with UOP's UCIS universal infinity independent-achromatic optical system, chromatic aberrations and curvature of field are both ideally corrected over the field of view. And the UCIS objectives own higher NA's producing crisp, clear images with minimal flare.

Benefit from UCIS infinity optics, UB100i series provide a flexible upgrade path to accommodate various accessories to meet your applications for observations of light field, phase contrast, dark field and polarization. And the UB100i series optics are perfect for both observations through the eyepiece as well as capturing images with a digital camera or a computer.

High-efficiency heat-sink-device of UB100i series keeps the microscopes surface at lower temperature even after long time work.

One-piece Construction Design From Arm to Base, Robust and Vibration Resistant.



### Trinocular Tub

Light is split 50/50 by a high quality coated prism. Easy to connect and working with digital camera and computer.



### Abbe Condenser with Color-coded Diaphragm Scale Markings



Abbe condenser NA 1.25 with aperture iris diaphragm and with socket to accommodate PH slide. Condenser center adjustable, height adjustable. Color-coded diaphragm scale markings corresponded with the objectives of different powers.

### Revolving Nosepiece

Quadruple nosepiece, Reversed type.



### Ergonomic Co-axial Coarse and Fine Adjustment Knob



Low positioning, Coaxial coarse and fine focusing knob, Coarse knob tension adjustable, Fine: 0.1mm per rotation, Coarse: 14mm per rotation, Minimum reading: 1 microns on left-side fine focusing knob.

### Grasping Part

Make you more easy to move the microscope.





## Dark Condenser

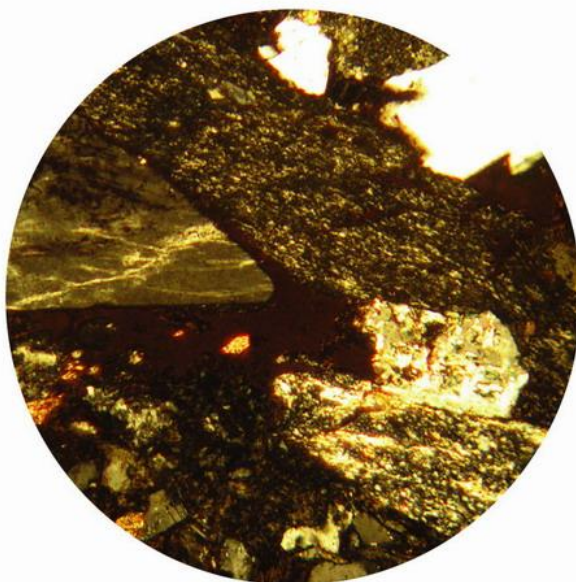
For your dark field observation and can be installed quickly and easily.



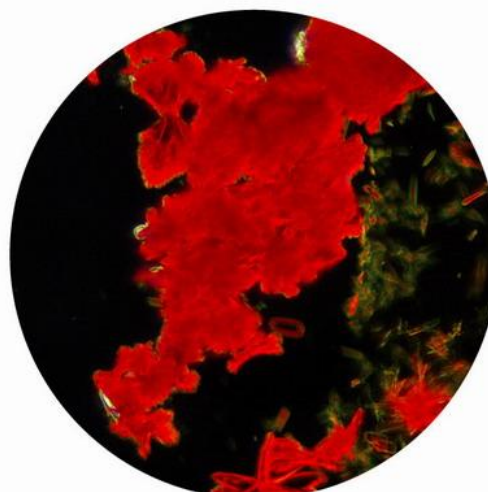
## Bright and Even Illumination



Built-in 6V/20W halogen bulb, High-aperture aspherical lens is equipped in standard Koler and the optional Kohler with field diaphragm to achieve more bright and even illumination. The brightness intensity control is conveniently located and provides steady even illumination at all levels.



Polarization



Darkfield

## Easy Lamp Replacement

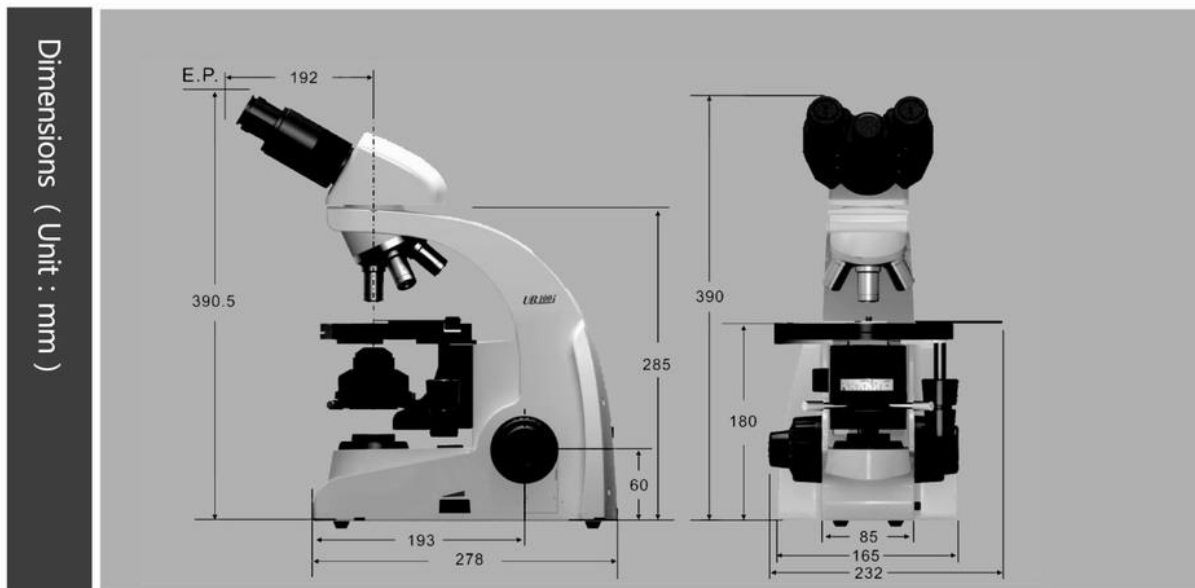
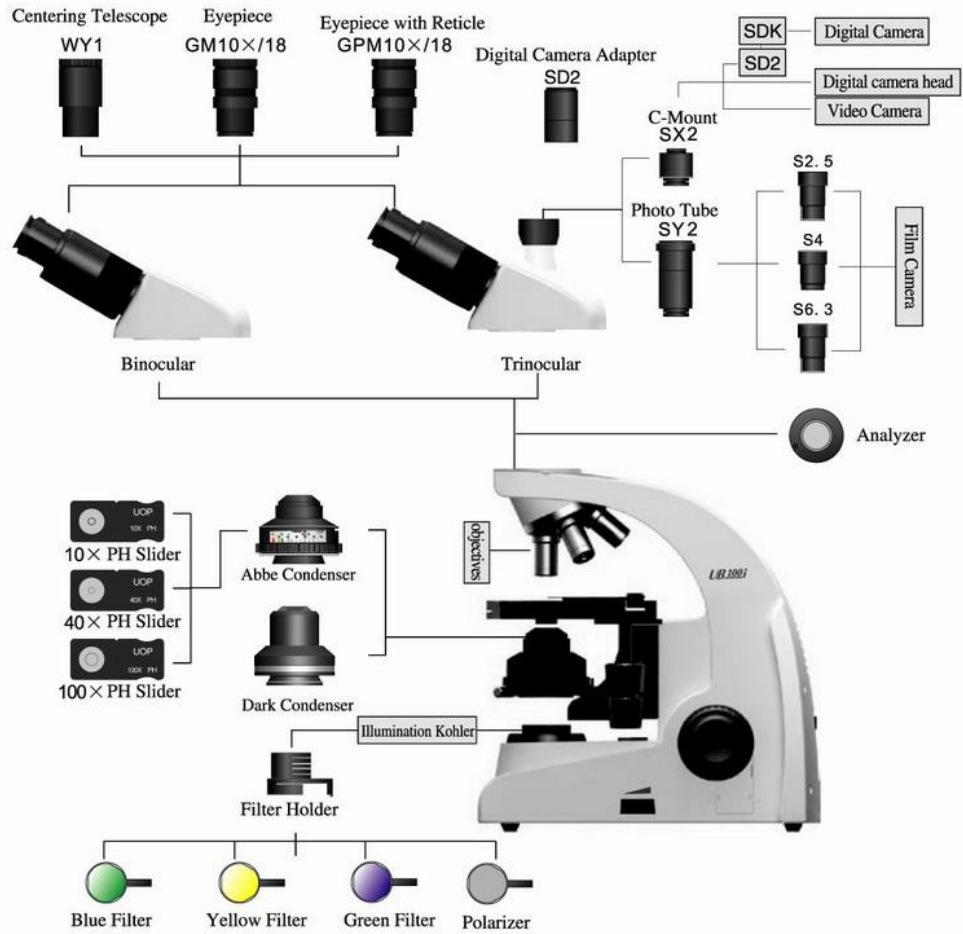
The lamp house cover is easy to open/close by just gripping the cover button and pull/push.

## High-efficiency heat-sink

limits the surface temperature of the microscope at lower temperature even after more than 24 hours working time and keeps you from burnt.

## UB100i Series Microscope Standard Outfits

Parts	Specifications	ABM102	ABM103	order number
ABM 100 Frame	One-piece construction from arm to base.	●	●	UB100
Optics	UCIS Infinity Independent Achromatic Optical Design	●	●	UB100
Seidentopf Observation Tube	Binocular Tube, Interpupillary distance 52-75mm,30°inclined,360° rotatable,	●	○	MS3
	Binocular Tube, Interpupillary distance 48-75mm,30°inclined,360° rotatable,	○	○	MS3A
	Trinocular Tube, Interpupillary distance 52-75mm,30°inclined,trinocular light is split 20/80 by a high quality prism.	○	●	MT3
	Trinocular Tube, Interpupillary distance 48-75mm,30°inclined,trinocular light is split 20/80 by a high quality prism.	○	○	MT3A
Plan Eyepiece	WF10X/18, High eye-point up to 21mm, diopter adjustable.	●●	●●	E1018PB
	WF10X/20, High eye-point up to 21mm, diopter adjustable.	○○	○○	E1020PB
	WF16X/14	○○	○○	E1614WA
	WF10X/18(Pointer), High eye-point up to 21mm, diopter adjustable.	○	○	E1018GB
	WF10X/20(Pointer), High eye-point up to 21mm, diopter adjustable.	○	○	E1020GB
	Reticule Eyepiece: CROSSWF10X/18	○	○	E1018RA
Reticule Eyepiece: CROSSWF10X/20	○	○	E1020RB	
Centering Telescope	CTE	○	○	WT2
Infinity Achromatic Objectives	4X/0.13 ∞/0.17, WD12.31	●	●	WB-X4A
	10X/0.30 ∞/0.17, WD6.75	●	●	WB-X10A
	40X/0.70 ∞/0.17, WD0.76 (Spring)	●	●	WB-X40A
	100X/1.25 ∞/0.17, WD0.12 (Spring,Oil)	●	●	WB-X100A
Infinity Achromatic Phase-Contrast Objectives(positive or negative)	PH 10X/0.30 ∞/0.17,WD6.75	○	○	WB-XP10A/WB-XP10A
	PH 40X/0.70 ∞/0.17, WD0.76 (Spring)	○	○	WB-XP40A/WB-XP40A
	PH 100X/1.25 ∞/0.17, WD0.12 (Spring,Oil)	○	○	WB-XP100A/WB-XP100A
Infinity Plan Objectives	Plan 4X/0.13 ∞/0.17,WD12.31	○	○	WB-P4A
	Plan 10X/0.30 ∞/0.17,WD4.00	○	○	WB-P10A
	Plan 20X/0.45 ∞/0.17,WD1.24	○	○	WB-P20A
	Plan 40X/0.70 ∞/0.17, WD0.29 (Spring)	○	○	WB-P40A
	Plan 60X/0.80 ∞/0.17, WD0.40 (Spring)	○	○	WB-P60A
	Plan 100X/1.25 ∞/0.17, WD0.09 (Spring,Oil)	○	○	WB-P100A
Infinity Plan Phase-Contrast Objectives	PH Plan 10X/0.30 ∞/0.17,WD4.00	○	○	WB-PPH10A/WB-PPH10A
	PH Plan 20X/0.45 ∞/0.17,WD1.24	○	○	WB-PPH20A/WB-PPH20A
	PH Plan 40X/0.70 ∞/0.17,WD0.29 (Spring)	○	○	WB-PPH40A/WB-PPH40A
	PH Plan 60X/0.80 ∞/0.17, WD0.40 (Spring)	○	○	WB-PPH60A/WB-PPH60A
PH Plan 100X/1.25 ∞/0.17,WD0.09 (Spring,Oil)	○	○	WB-PPH100A/WB-PPH100A	
Phase-Contrast Slide	10X PH	○	○	PCB-XP10A
	40X PH	○	○	PCB-XP40A
	100X PH	○	○	PCB-XP100A
Condenser	Abbe condenserAbbe condenser: NA 1.25, with iris diaphragm, with socket to accommodate PH-slide. Condenser center adjustable, color-coded diaphragm scale markings cooresponded with the objectives of different powers.	●	●	JG3
	Dark Condenser	○	○	JG10
Stage	Mechanical Stage: 156x138mm platform, with X/Y travel of 76x54mm by low-positioned X/Y coaxial control knob, with scale mark and specimen-slide clip, enough space to hold 2 specimen-slide.	○	○	ZT2
	Mechanical Stage: 142x135mm platform, with X/Y travel of 76x52mm by low-positioned X/Y coaxial control knob, with scale mark and specimen-slide clip, enough space to hold 2 specimen-slide.	●	●	ZT3
Revolving Nosepiece	quadruple, inward facing.	●	●	ZQ470
	quintuple, inward facing	○	○	ZQ570
Illumination Kohler	No field diaphragm	●	●	KL2
	With field diaphragm	○	○	KL3
Electrical Parts	For Halogen Bulb Input: 100-240V ~ 0.5A, 47-63Hz, Output:6V 3.4A, Fuse:3.15A, 250V, F φ5×20mm, Halogen Bulb Socket: G4,CE Certified	●	●	DQ3
	For LED	○	○	DQL1
C-Mount	SX2: 0.5X	○	○	SX2
	SX3: 1X	○	●	SX3
Digital Camera Adapter	SD2	○	○	SD2
Photo Tube	SY2	○	○	SY2
	PE2.5X	○	○	S2.5
Photo Eyepiece	PE4X	○	○	S4
	PE6.3X	○	○	S6.3
	Blue	●	●	LA2-0011
Filter	Green	○	○	LU2-0011
	Yellow	○	○	LH2-0011
	Grass Glass	○	○	LB2-0011
	Filter Holder: (Attached to the Kohler) for more than one filter.	○	○	LA1-0071
Polarization kits	Analyzer	○	○	PQ1
	Polarizer	○	○	PY1
Illumiation Bulb	6V20W Osram Halogen Bulb	●	●	BZ-0022A
	3W LED Bulb	○	○	DQL1-1000
Immerse Oil	8ml	●	●	BZ-0027
Allen Screw Driver	φ2mm	●	●	BZ2-0018
Power Line	1.8m, CE certified	●	●	BZ-0021
Package	Inner package: foam, plastic bag; Out Package: Paper box	●	●	BZ3-0011A
<b>Symbol Meaning: ● means standard, ○ means optional</b>				



Net weight of Standard Outfits:6.7kg

Gorss Weight of Standard Outfits:9.1kg